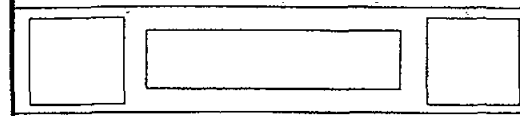
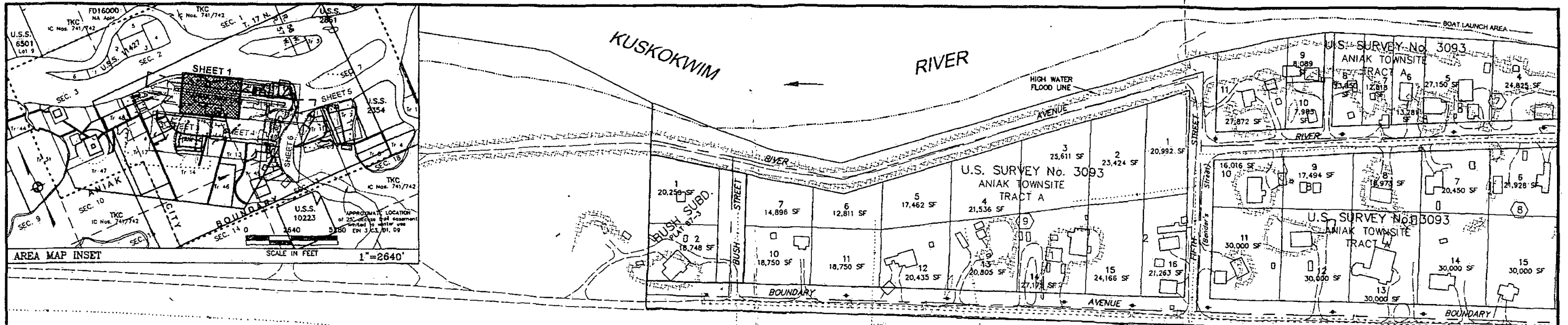


APPENDIX C

DCED LAND PARCEL MAPS



MAP NOTES
 This map was prepared by the Interior River Resources Conservation and Development (DCRD) Council in cooperation with Alaska Department of Community and Economic Development (DCED) using funds provided by the U.S. Bureau of Indian Affairs. The Interior Rivers R C & D Council contracted with Geomatics International Services, Inc. in May of 2001 to prepare the map.
 This map should not be construed as a survey. On-site surveys should be conducted prior to engineering or construction.
 This map was compiled to meet horizontal and vertical accuracy in accordance with national map accuracy standards.
 Property and utility information has been generated from readily available sources with limited accuracy checks. Property information is not intended to represent a title search of the Recorder's Office records. Utility location is approximate and shows only the main line as the service lines have been omitted for clarity. Generally, the information is current as February 2002.
 This map is based on photography acquired on June 1, 2001 at a nominal scale of 1 in = 800 ft.
 Aerialmap U3 prepared the orthophoto and topographic mapping.
 The orthophoto is an aerial photo which has been corrected, by rectification to ground control stations, to remove distortions and warpage due to ground topography and aircraft tilt and trim.

HORIZONTAL AND VERTICAL CONTROL
 The control network for this digital orthophoto was U.S.C.G. ANIAK NE BASE. Published horizontal datum NAD 1983 coordinates for this instrument are North 61° 34' 33.5690" and West 159° 31' 27.9437". The vertical datum NGVD 1929 for this instrument is 84 feet above mean high water (MHW).
 The contours were prepared at two (2) foot contour intervals with index contours every ten (10) feet.

FLOOD DATA
 The City of Aniak participated in the National Flood Insurance Program. The Corp of Engineers for the Federal Emergency Management Agency (FEMA) produced a Flood Insurance Study and Flood Insurance Rate Map (FIRM) in 1983 for Aniak. The FIRM effective date is April 2, 1990. The base flood elevations based on the open water flood are 87 ft. on the southwest side of town, 88 ft. across the airport runway, 89 ft. through the middle of town, and 89 ft. in East Aniak (across Inokah Slough). These elevations are referenced to the National Geodetic Vertical Datum of 1929. U.S.C.G. ANIAK NE BASE is an elevation reference mark for the FIRM.
 The U.S. Army Corp of Engineers (COE) located High Water Elevation signs throughout Aniak at the appropriate elevations. During the preparation of this map 3 of these signs were recovered by G.I.S. Inc. and tied to U.S.C.G. ANIAK NE BASE. The following table compares the relationship of the COE elevations for flood data correlated to this map survey.

LOCATION	COE	SLA
Public Field	87.0'	85.5'
Old JC Store	88.5'	85.5'
Aniak Traditional Council	87.0'	85.5'

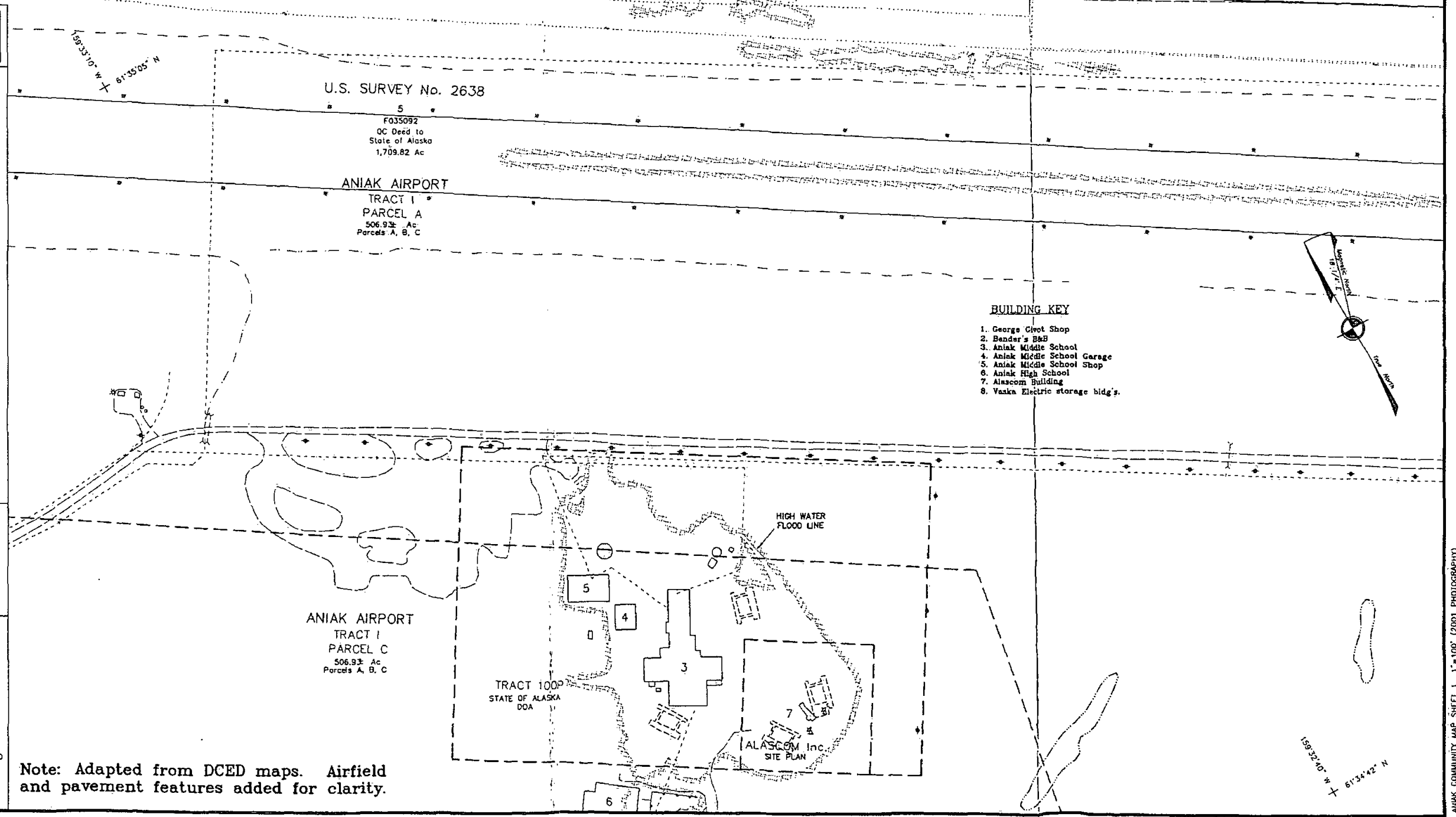
Aniak is below the flood elevation with the exception of small areas including the surrounding ground around the Kropac Vocational School and Alascom complex and some very small areas of ground within the townsite of Aniak, US Survey, 1463) lot, and the across the Slough Subdivision. These areas are delineated within the 88.5 foot high water elevation level and are displayed with blue hatching.

Community Map ANIAK
 61° 34' 29" N 159° 32' 13" W (NAD 83)
 Approximate Elevation: 86'
 Township 17 North, Range 57 West, S.M., AK
 U.S.G.S. Quadrangle "RUSSIAN MISSION (C-2)," Alaska
 KUSKOKWIM RECORDING DISTRICT

LEGEND

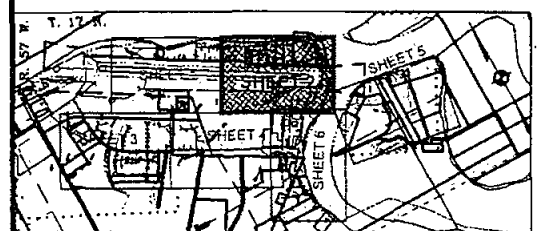
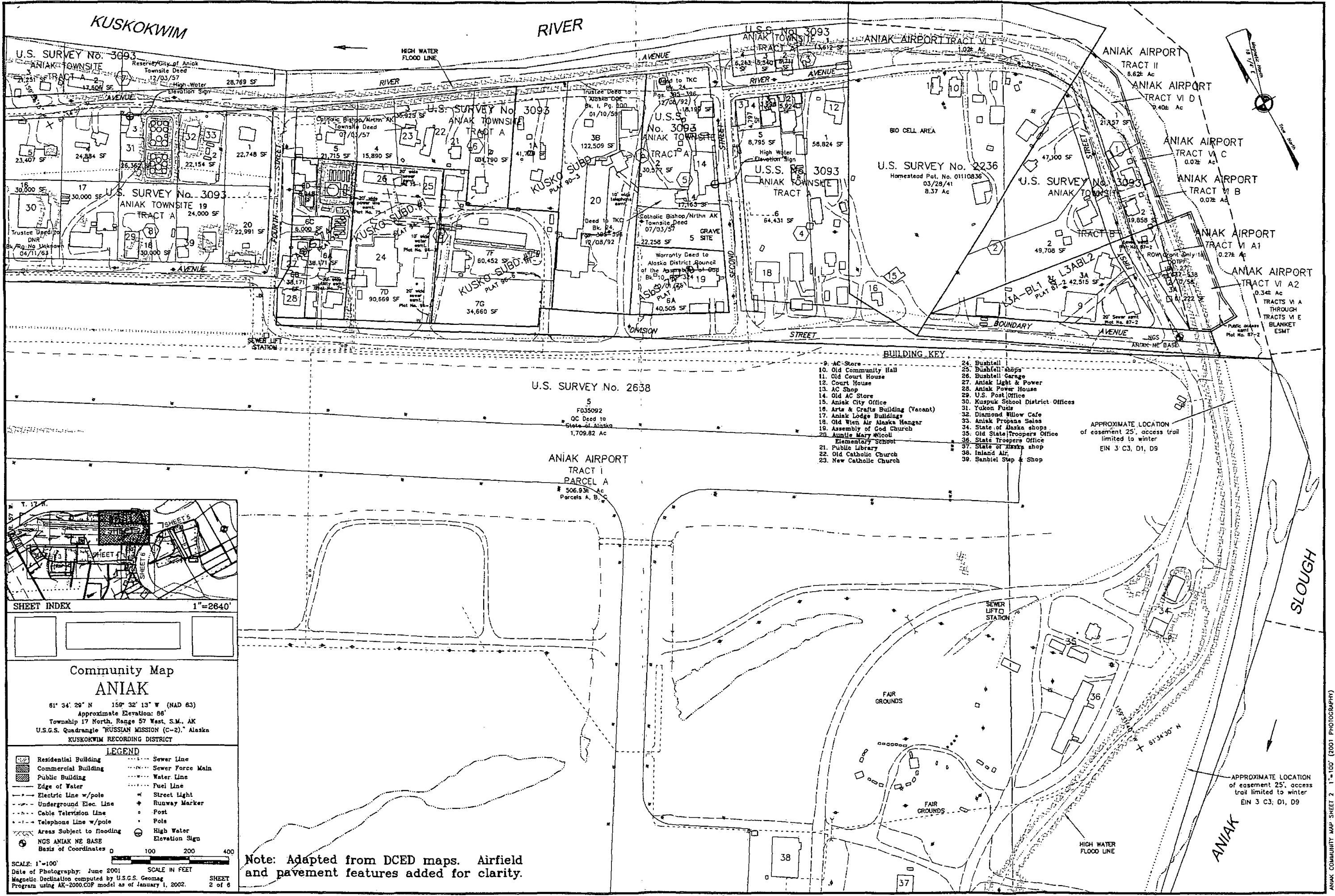
	Residential Building		Sewer Line
	Commercial Building		Sewer Force Main
	Public Building		Water Line
	Edge of Water		Fuel Line
	Electric Line w/pole		Street Light
	Underground Elec. Line		Runway Marker
	Cable Television Line		Post
	Telephone Line w/pole		Pole
	Areas Subject to flooding		High Water Elevation Sign

SCALE: 1"=100'
 Date of Photography: June 2001
 Magnetic declination computed by U.S.G.S. Geomag Program using AK-2000.COF model as of January 1, 2002.
 SHEET 1 of 6



- BUILDING KEY**
1. George Clout Shop
 2. Bender's B&B
 3. Aniak Middle School
 4. Aniak Middle School Garage
 5. Aniak Middle School Shop
 6. Aniak High School
 7. Alascom Building
 8. Vaska Electric storage bldg's.

Note: Adapted from DCED maps. Airfield and pavement features added for clarity.



SHEET INDEX 1"=2640'

Community Map ANIAK

61° 34' 20" N 159° 32' 13" W (NAD 83)
 Approximate Elevation: 80'
 Township 17 North, Range 57 West, S.M., AK
 U.S.G.S. Quadrangle "RUSSIAN MISSION (C-2)," Alaska
 KUSKOKWIM RECORDING DISTRICT

LEGEND

Residential Building	Sewer Line
Commercial Building	Sewer Force Main
Public Building	Water Line
Edge of Water	Fuel Line
Electric Line w/pole	Street Light
Underground Elec. Line	Runway Marker
Cable Television Line	Post
Telephone Line w/pole	Pole
Areas Subject to Flooding	High Water Elevation Sign
NGS ANIAK NE BASE	
Basis of Coordinates	

SCALE: 1"=100'

Date of Photography: June 2001
 Magnetic Declination computed by U.S.G.S. Geomag Program using AR-2000.GP model as of January 1, 2002.

SCALE IN FEET

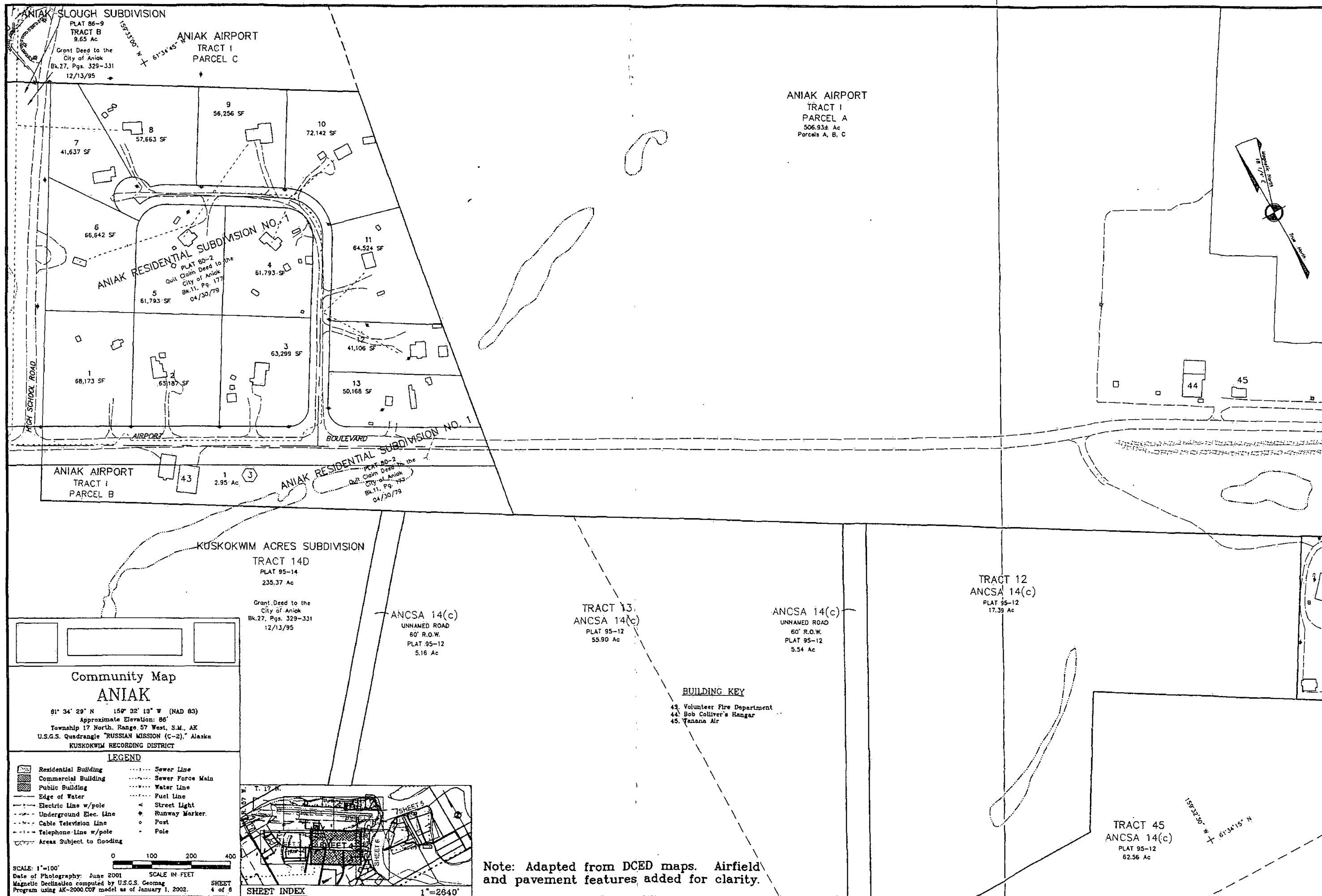
SHEET 2 of 6

Note: Adapted from DCED maps. Airfield and pavement features added for clarity.

- BUILDING KEY**
- | | |
|---|-------------------------------------|
| 9. AC Store | 24. Bushnell |
| 10. Old Community Hall | 25. Bushnell shops |
| 11. Old Court House | 26. Bushnell Garage |
| 12. Court House | 27. Aniak Light & Power |
| 13. AC Shop | 28. Aniak Power House |
| 14. Old AC Store | 29. U.S. Post Office |
| 15. Aniak City Office | 30. Kuspiuk School District Offices |
| 16. Arts & Crafts Building (Vacant) | 31. Yukon Fuel |
| 17. Aniak Lodge Building | 32. Diamond Willow Cafe |
| 18. Old Wien Air Alaska Hangar | 33. Aniak Propane Sales |
| 19. Assembly of God Church | 34. State of Alaska shops |
| 20. Auntie Mary Nicol Elementary School | 35. Old State Troopers Office |
| 21. Public Library | 36. State Troopers Office |
| 22. Old Catholic Church | 37. State of Alaska shop |
| 23. New Catholic Church | 38. Inland Air |
| | 39. Sanibel Step & Shop |

APPROXIMATE LOCATION of easement 25', access trail limited to winter EIN 3 C3, D1, D9

APPROXIMATE LOCATION of easement 25', access trail limited to winter EIN 3 C3, D1, D9



ANIAK SLOUGH SUBDIVISION
 PLAT 86-9
 TRACT B
 9.65 Ac
 Grant Deed to the
 City of Aniak
 Bk.27, Pgs. 329-331
 12/13/95

ANIAK AIRPORT
 TRACT I
 PARCEL C

ANIAK AIRPORT
 TRACT I
 PARCEL A
 506.93± Ac
 Parcels A, B, C

ANIAK RESIDENTIAL SUBDIVISION NO. 1
 PLAT 80-2
 Quit Claim Deed to the
 City of Aniak
 Bk.11, Pg. 177
 04/30/79

KUSKOKWIM ACRES SUBDIVISION
 TRACT 14D
 PLAT 95-14
 235.37 Ac
 Grant Deed to the
 City of Aniak
 Bk.27, Pgs. 329-331
 12/13/95

ANCSA 14(c)
 UNNAMED ROAD
 60' R.O.W.
 PLAT 95-12
 5.16 Ac

TRACT 13
 ANCSA 14(c)
 PLAT 95-12
 55.90 Ac

ANCSA 14(c)
 UNNAMED ROAD
 60' R.O.W.
 PLAT 95-12
 5.54 Ac

TRACT 12
 ANCSA 14(c)
 PLAT 95-12
 17.39 Ac

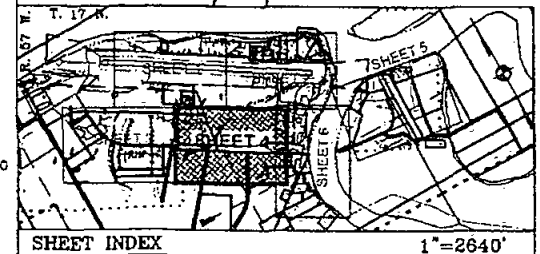
TRACT 45
 ANCSA 14(c)
 PLAT 95-12
 62.56 Ac

Community Map
ANIAK
 61° 34' 29" N 159° 32' 13" W (NAD 83)
 Approximate Elevation: 86'
 Township 17 North, Range 57 West, S.M., AK
 U.S.G.S. Quadrange "RUSSIAN MISSION (C-2)," Alaska
 KUSKOKWIM RECORDING DISTRICT

LEGEND

	Residential Building		Sewer Line
	Commercial Building		Sewer Force Main
	Public Building		Water Line
	Edge of Water		Fuel Line
	Electric Line w/pole		Street Light
	Underground Elec. Line		Runway Marker
	Cable Television Line		Post
	Telephone Line w/pole		Pole
	Area Subject to Flooding		

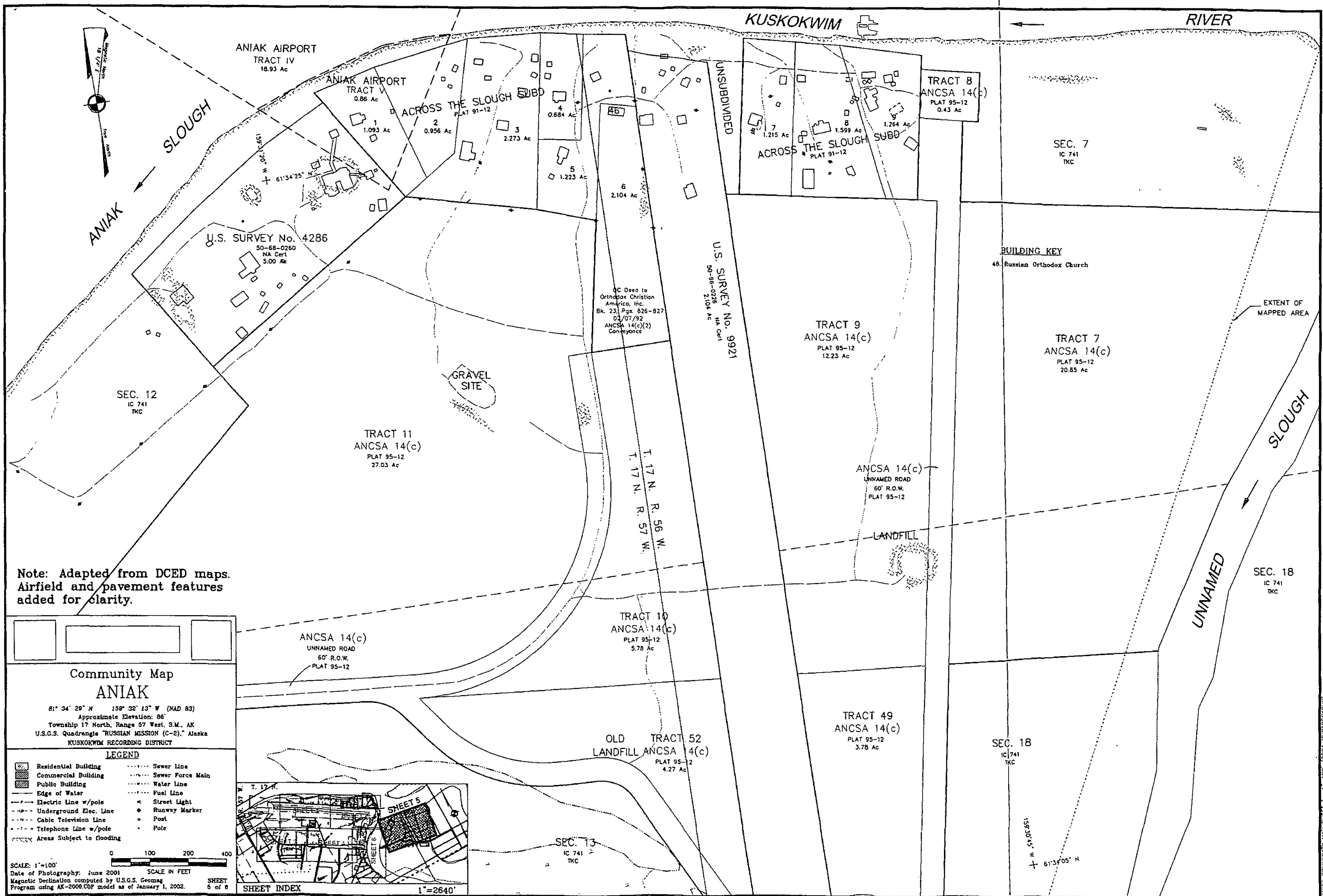
BUILDING KEY
 43. Volunteer Fire Department
 44. Bob Colliver's Hangar
 45. Yanana Air



Note: Adapted from DCED maps. Airfield and pavement features added for clarity.

SCALE: 1"=100'
 Date of Photography: June 2001
 Magnetic Declination computed by U.S.G.S. Geomag
 Program using AK-2000.COF model as of January 1, 2002.
 SHEET 4 of 8

ANIAK COMMUNITY MAP SHEET 4 1"=100' (2001 PHOTOGRAPHY)



Note: Adapted from DCED maps.
Airfield and pavement features
added for clarity.



Community Map
ANIAK

81° 34' 29" N 159° 32' 13" W (NAD 83)
Approximate Elevation: 86'
Township 17 North, Range 57 West, S.M., AK
U.S.G.S. Quadrangle "RUSSIAN MISSION (C-2)," Alaska
KUSKOKWIM RECORDING DISTRICT

LEGEND

- | | | | |
|--|---------------------------|--|------------------|
| | Residential Building | | Sewer Line |
| | Commercial Building | | Sewer Force Main |
| | Public Building | | Water Line |
| | Edge of Water | | Fuel Line |
| | Electric Line w/pole | | Street Light |
| | Underground Elec. Line | | Runway Marker |
| | Cable Television Line | | Post |
| | Telephone Line w/pole | | Pole |
| | Areas Subject to flooding | | |



SCALE: 1"=100'

Date of Photography: June 2001

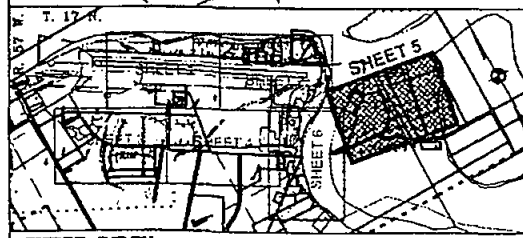
SCALE IN FEET

Magnetic Declination computed by U.S.G.S. Geomag

Program using AK-2000.C02 model as of January 1, 2002.

SHEET

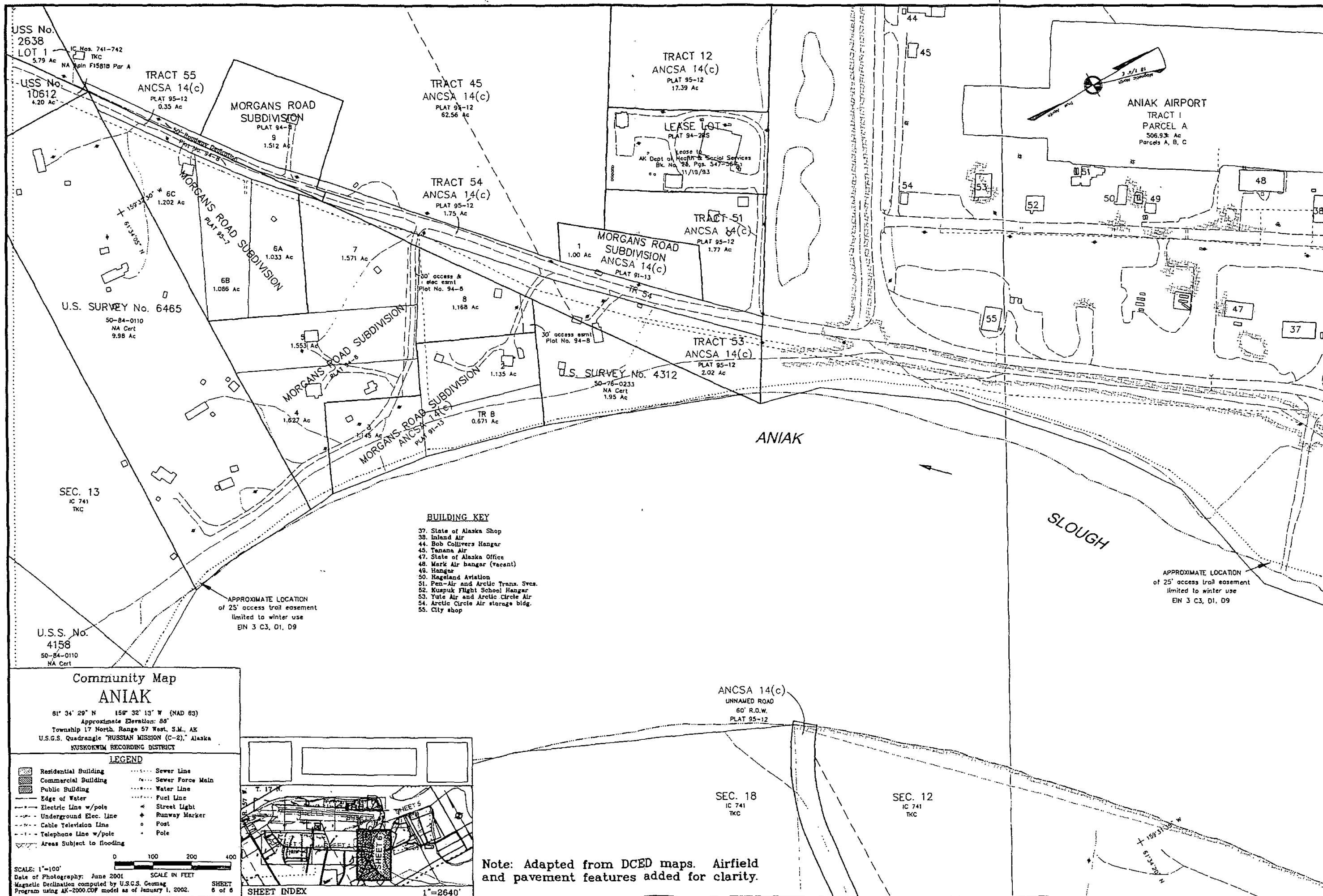
5 of 8



SHEET INDEX

1"=2640'

ANIAK COMMUNITY MAP SHEET 5 1"=100' (2001 PHOTOGRAPHY)



USS No. 2638
LOT 1
5.79 Ac
IC Nos. 741-742
TKC
NA Main F1581B Par A

USS No. 10612
4.20 Ac

TRACT 55
ANCSA 14(c)
PLAT 95-12
0.35 Ac

TRACT 45
ANCSA 14(c)
PLAT 95-12
62.56 Ac

TRACT 12
ANCSA 14(c)
PLAT 95-12
17.39 Ac

TRACT 54
ANCSA 14(c)
PLAT 95-12
1.75 Ac

LEASE LOT
PLAT 94-245

TRACT 51
ANCSA 14(c)
PLAT 95-12
1.77 Ac

MORGANS ROAD
SUBDIVISION
ANCSA 14(c)
PLAT 91-13

TRACT 53
ANCSA 14(c)
PLAT 95-12
2.02 Ac

U.S. SURVEY No. 4312
50-76-0233
NA Cert
1.95 Ac

U.S. SURVEY No. 6465
50-84-0110
NA Cert
9.98 Ac

SEC. 13
IC 741
TKC

U.S.S. No. 4158
50-84-0110
NA Cert

BUILDING KEY

- 37. State of Alaska Shop
- 38. Inland Air
- 44. Bob Collivers Hangar
- 45. Tanana Air
- 47. State of Alaska Office
- 48. Mark Air hangar (vacant)
- 49. Hangar
- 50. Bageland Aviation
- 51. Pea-Air and Arctic Trans. Svcs.
- 52. Kuspuq Flight School Hangar
- 53. Yute Air and Arctic Circle Air
- 54. Arctic Circle Air storage bldg.
- 55. City shop

APPROXIMATE LOCATION
of 25' access trail easement
limited to winter use
EIN 3 C3, D1, D9

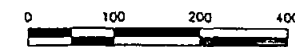
APPROXIMATE LOCATION
of 25' access trail easement
limited to winter use
EIN 3 C3, D1, D9

**Community Map
ANIAK**

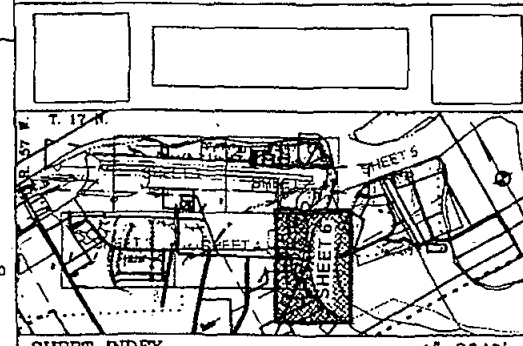
81° 34' 29" N 150° 32' 13" W (NAD 83)
Approximate Elevation: 88'
Township 17 North, Range 57 West, S.M., AK
U.S.G.S. Quadrangle "RUSSIAN MISSION (C-2)," Alaska
KUSKOKWIM RECORDING DISTRICT

LEGEND

- | | | | |
|--|---------------------------|--|------------------|
| | Residential Building | | Sewer Line |
| | Commercial Building | | Sewer Force Main |
| | Public Building | | Water Line |
| | Edge of Water | | Fuel Line |
| | Electric Line w/pole | | Street Light |
| | Underground Elec. Line | | Runway Marker |
| | Cable Television Line | | Post |
| | Telephone Line w/pole | | Pole |
| | Areas Subject to flooding | | |



SCALE: 1"=100'
Date of Photography: June 2001
Magnetic Declination computed by U.S.G.S. Geomag
Program using AK-2000.COF model as of January 1, 2002.



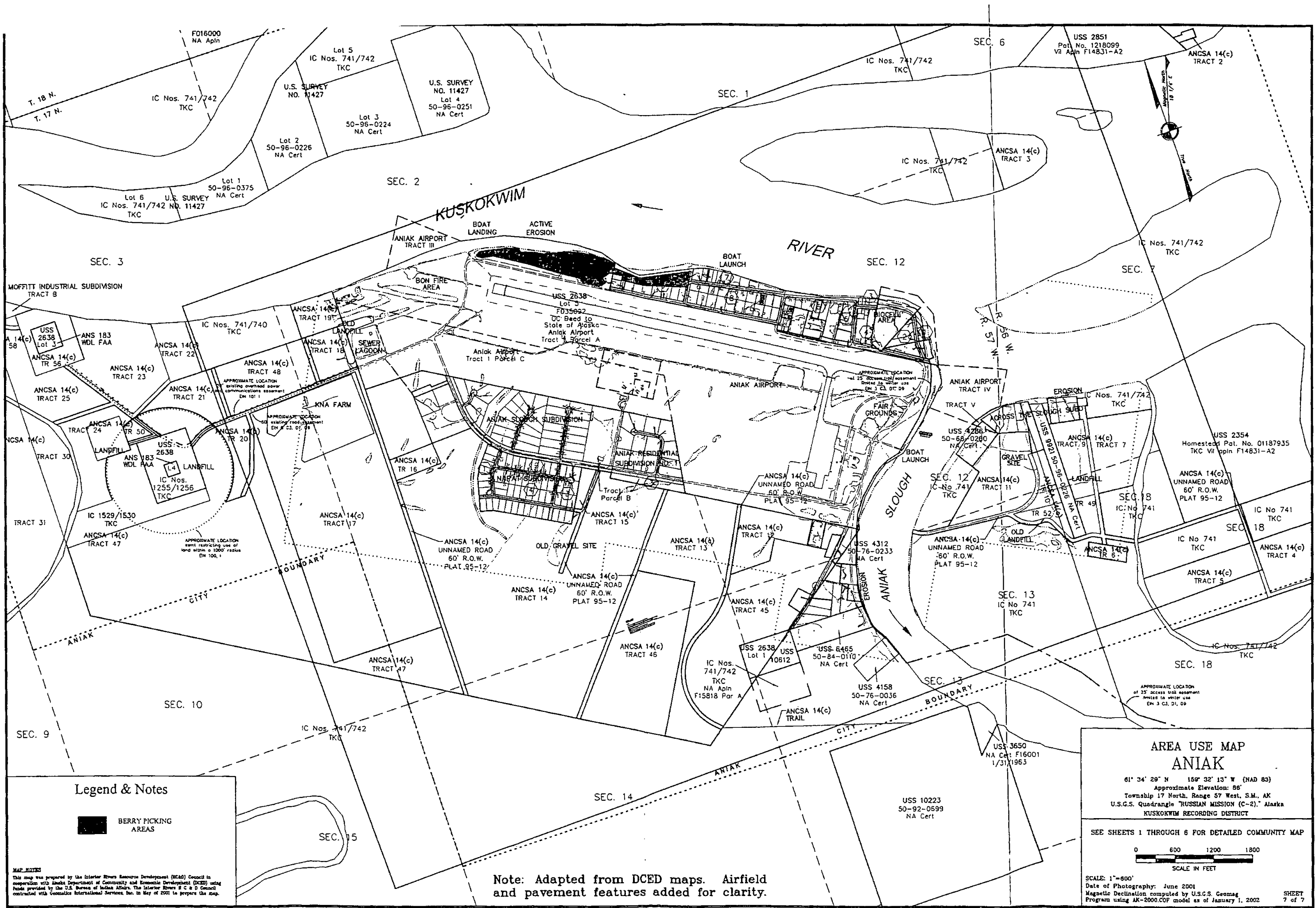
SHEET INDEX
1"=2640'

ANCSA 14(c)
UNNAMED ROAD
60' R.O.W.
PLAT 95-12

SEC. 18
IC 741
TKC

SEC. 12
IC 741
TKC

Note: Adapted from DCED maps. Airfield and pavement features added for clarity.



Legend & Notes

 BERRY PICKING AREAS

MAP NOTES
 This map was prepared by the Interior River Resource Development (IRRD) Council in cooperation with Alaska Department of Community and Economic Development (DCED) using funds provided by the U.S. Bureau of Indian Affairs. The Interior River R.C. & D. Council contracted with Geomatics International Services, Inc. in May of 2001 to prepare the map.

Note: Adapted from DCED maps. Airfield and pavement features added for clarity.

AREA USE MAP ANIAK
 61° 34' 29" N 159° 32' 13" W (NAD 83)
 Approximate Elevation: 88'
 Township 17 North, Range 57 West, S.M., AK
 U.S.G.S. Quadrangle "RUSSIAN MISSION (C-2)," Alaska
 KUSKOKWIM RECORDING DISTRICT

SEE SHEETS 1 THROUGH 6 FOR DETAILED COMMUNITY MAP

0 600 1200 1800
 SCALE IN FEET

SCALE: 1"=600'
 Date of Photography: June 2001
 Magnetic Declination computed by U.S.G.S. Geomag Program using AK-2000.COF model as of January 1, 2002

SHEET 7 of 7

ANIAK AREA USE MAP SHEET 7 1"=600' (2001 PHOTOGRAPHY)